

Quooker®

The tap that does it all

Always have instant 100°C boiling water.
And chilled-filtered and sparkling, with our CUBE.



May 2025

A portrait of Han Peteri, an elderly man with glasses, wearing a dark suit, white shirt, and patterned tie. He is looking slightly to the side with a thoughtful expression. The entire image has a red tint.

From idea to icon

“ Suddenly, I could see it before me.
When I thought of it, it gave me this
warm feeling inside and I couldn't
stop thinking about the idea...
I was going to make a tap that
produces boiling water! ”

Han Peteri (1918-2007)

Dutch physicist and inventor of the Quooker.

Discover
Quooker's history



Our story

Quooker is the world's first **true 100 °C boiling-water tap**. It was invented by Dutch physicist Han Peteri, who in 1970 had an idea: why not create a tap that provides instant boiling water? He left his job to start work on a prototype. His sons Niels and Walter soon joined him – and they're still running Quooker today.

Only these days, a Quooker can do so much more. Like producing hot, cold and boiling water from the same tap. And – since the invention of our CUBE – chilled-filtered and sparkling water, too. That's why it's 'the tap that does it all'.

Our sustainable mission

At Quooker, we want to provide as many households as possible with boiling, chilled and sparkling water. And we want to do that in an intelligent and responsible way. We make products to save time, water and energy. Quookers are long-lasting and easy to repair. But our sustainable approach goes even further. It's in everything we do. From our care for Quooker people, to our obsession with brilliant service.

Quooker HQ

All Quooker taps are made at our sustainable headquarters in Ridderkerk, near Rotterdam where the Quooker was invented. Everything's under one roof. And we have local offices in sixteen countries – including the UK, where our team's based in Manchester.

A red hot success

Wherever we launch Quooker, it becomes a big hit. Our international success means we're still growing fast. At the same time, we're still a family business. Bringing instant 100 °C boiling water, hot and cold, chilled-filtered and sparkling to the world every day.

Did you know
Quooker is the world's
first true 100 °C boiling
water tap? Han Peteri
invented it in 1970, and
perfected it over more
than 20 years from
the basement of his
Rotterdam home.

Boiling water from
a Quooker is exactly
100 °C as it comes
out of the tap.



Fusion Round patinated brass

How a Quooker works

Push-push-turn. That's the simple but child-safe technique to get 100°C boiling water, just like that. No waiting. And no wasted resources. But what's happening underneath the sink? And what does a Quooker CUBE add?

Every Quooker system is made up of a tap on the work surface and a tank in the cupboard underneath.

Water is stored in the tank under pressure, at 108°C. The tank is vacuum insulated, so uses hardly any energy: just 10W to keep the water at that temperature – the equivalent of two LEDs.

The moment boiling water leaves the tap, fresh water flows into the tank. It's immediately brought up to temperature.

Instant boiling and hot water

As well as 100°C boiling water, a Quooker with our COMBI tank can also provide instant 60°C hot water too. It does this by mixing cold water from the water inlet with boiling water from the Quooker. Reducing water waste, as you won't need to wait for the tap to run hot.

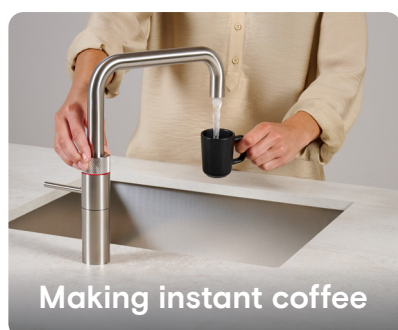
Filtered chilled water

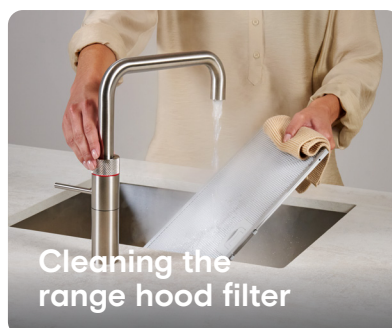
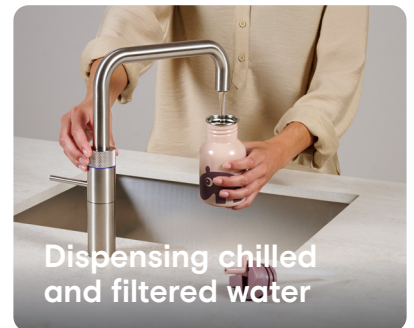
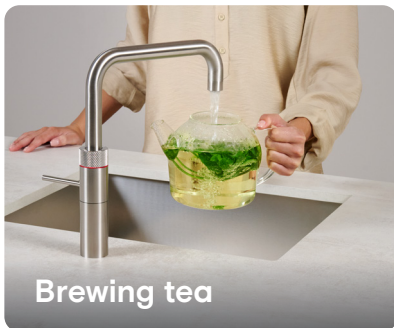
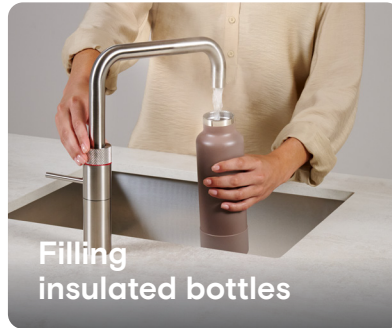
Add our CUBE and you can also enjoy sparkling and chilled water from the Quooker tap. CUBE is a second unit that goes alongside the main Quooker tank. It's got a two-stage filter that uses hollow fibre and activated carbon. Filtering microbiologically, and also removing chlorine and impurities. You can attach it to our CO₂ cylinders that each provide 60 litres of sparkling water.



A Quooker has so many uses

Instant boiling water whenever you need it, 24/7. You'll soon find your new Quooker is indispensable. From your boiled egg first thing in the morning, to your cup of lavender tea last thing at night.





And so many benefits

As well as the dozens of uses you'll find for always-ready boiling water, Quooker has plenty of benefits too. It's one of the safest, most sustainable ways to upgrade your home.

Fusion Round gold



Better-tasting water

Water from a Quooker tastes better, thanks to the HITAC® filter in the tank. It stores water at 108 °C, making sure it's always 'heated through'. And the CUBE gives you chilled and sparkling water, filtered using both an activated charcoal and a hollow fibre filter.



A safer solution

A Quooker is the safest way to use boiling water. Quooker taps have a child-safe mechanism and the tap itself boasts double-walled insulation. The light-ring also glows red when boiling water is pouring.



More convenience

Brew tea. Boil pasta. Blanch vegetables. Or clean that stubborn casserole dish. You'll be surprised by how useful it is to have instant 100 °C water on tap.



Save time

Dispense boiling water without a wait. With a Quooker in your kitchen, you'll save precious time every day. And if you opt for the CUBE, you'll never have to go to the shop for bottled still or sparkling water again.



Less plastic waste

With our CUBE option, you can say goodbye to buying bottled water. CUBE gives you instant sparkling, and chilled-filtered too.



Save water

With a Quooker, you never use more water than you need. Our most popular PRO3 tank saves 500 litres on average each year. Our COMBI conserves even more: it immediately dispenses 60 °C hot water too. And our COMBI+ goes even further – conserving up to 4,200 litres of water.



More space

Free up your worktop, by getting rid of the kettle. And with no trailing wires, and our patented push-push-turn mechanism, Quooker's safer when there are young hands around.



Conserve energy



Quooker tanks feature high-vacuum insulation. It takes very little energy (just 10W) to keep the water stored above boiling point. Our COMBI tanks are 'A-rated' for energy. They're the most energy-efficient solution when it comes to hot water.

Our taps

Flex Round

All-in-one tap with a flexible pull-out hose.



Fusion

Round en Square

All-in-one tap with an iconic design.



Classic Fusion

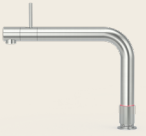
Round en Square

All-in-one tap with classic decorative details.



Front

All-in-one tap with an ergonomic mixer lever.



Nordic Single tap

Round en Square

Boiling-water tap with adjustable height.



Classic Single tap

Round

Boiling-water tap with adjustable height and decorative details.



Nordic Twintaps

Round

Boiling-water tap with a matching mixer tap



Nordic Twintaps

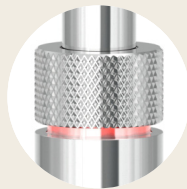
Square

Boiling-water tap with a matching mixer tap.



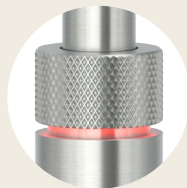
Our finishes

Style out your tap and soap dispenser



Chroom

A timeless look meets low maintenance.



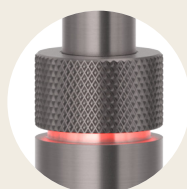
Stainless steel

A contemporary look to match other items in your kitchen.



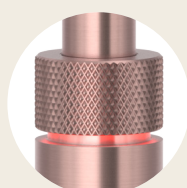
Black

Elegant, chic and mysterious, yet bold and rugged at the same time.



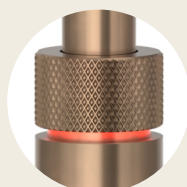
Gunmetal

This hue combines rich, dark grey with blue undertones and a subtle sheen. It is bold, masculine, cool and robust.



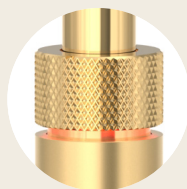
Rose copper

This unique hue, inspired by copper but with a hint of pink, brings a warm, timeless bit of shine to your kitchen.



Patinated brass

Our taps in patinated brass are like fine wines: give them time to mature and they only get better, and more beautiful, through the years.



Gold

Plated with a layer of 24-karat gold. An option for your kitchen that's equal parts luxury and practicality.

Choose your tap

We have eight different tap shapes to choose from, available in up to seven finishes. They all provide instant 100 °C boiling water – saving you and your family time. And by adding our optional CUBE, they can all give you instant chilled-filtered and sparkling, too – plus hot and cold of course, which always come as standard.

Explore a range of finishes to complement your kitchen aesthetic.

Flex Round rose copper



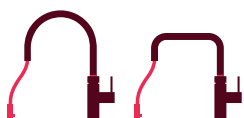
Flex Round

All-in-one tap with flexible pull-out hose

Ideal for washing veggies or cleaning the sink. And it's super-safe too. As soon as the hose is pulled forward, the boiling water flow is switched off. So 100 °C water can only be dispensed directly downwards, when the hose is tucked in. Whereas hot and cold from the flexible mixer can be directed to every corner of the sink.

Available in five different finishes. And – like all our taps – fully CUBE-compatible. So you can add instant sparkling and chilled-filtered, too.

Specifications Flex



Dimensions

Height Round:	411mm
Spout reach:	220mm
Tap hole:	Ø35mm
Turning radius:	270°

Finishes

chrome
stainless steel
black
gunmetal
rose copper

Did you know our augmented reality app lets you try our taps in your kitchen today?
Scan the QR code and see.



Flex Round with Nordic soap dispenser gunmetal



Fusion

Round and Square

All-in-one tap

The Fusion is an iconic Quooker design. It combines looks and functionality, to suit every kitchen. It produces 100 °C boiling or cold and hot water. But it also provides chilled and sparkling water when combined with the CUBE. The Fusion tap comes in two variants: round or square. And you can choose from up to seven finishes.

Specifications Fusion



Dimensions

Height Round:	366 mm
Height Square:	291 mm
Spout reach:	220 mm
Tap hole:	Ø35 mm
Turning radius:	360 °


Finishes

chrome
stainless steel
black
gunmetal
rose copper
patinated brass
gold

Did you know a typical UK household boils water around **six times a day**? Quooker taps are a revelation for tea and coffee drinkers. And they save time boiling potatoes, pasta, eggs, couscous and more.



Fusion Square black



The Fusion
is available in
Round and Square.
And seven
finishes.

Every Quooker
has a textured bezel.
For boiling water, just
push-push-turn.

Did you know
the average household drinks 1 litre of sparkling water per day? That means that with a Quooker CUBE you can save 365 plastic water bottles per year. That has an impact!



**The Classic Fusion.
Elegant in any
country kitchen.**



Classic Fusion

Round and Square

All-in-one tap

Our Classic Fusion comes in two shapes: round or square. And it's available in three stylish finishes: chrome, stainless steel or patinated brass. Save time with instant 100 °C boiling water. Make the most of the built-in hot and cold mixer. And add our CUBE, if you'd like chilled-filtered and sparkling, too.

Specifications

Classic Fusion



Dimensions

Height Round:	366mm
Height Square:	291mm
Spout reach:	220mm
Tap hole:	Ø35mm
Turning radius:	360°

Finishes

chrome
stainless steel
patinated brass

Did you know boiling water from a Quooker comes out in an aerated flow? It's made of tiny droplets. So if you ever touch it by accident, there's time to move your hand away before it can scald you.



Classic Fusion Square chrome



Front

An all-in-one tap with ergonomic controls

Why do we call this tap Front? Because unlike the rest of our range, the lever for hot and cold water is at the front of the spout, not at the base. It's available in four different finishes: stainless steel, rose copper, gunmetal and black. And just like all other Quooker taps, you can connect to our optional CUBE for chilled-filtered and sparkling, as well as instant 100 °C boiling water.

Specifications Front



Dimensions

Height:	255 mm
Spout reach:	292 mm
Total depth:	335 mm
Tap hole:	Ø35 mm
Turning radius:	270 °

Finishes

stainless steel
black
gunmetal
rose copper

Front with Nordic soap dispenser black



Did you know for all our taps, there's a refillable soap dispenser to match? It slots into your worktop next to the Quooker. Clearing away the clutter of bottles or soap trays.

Did you know
a Quooker tap has
over 70 parts?

So it's smarter than
an ordinary tap. But
straightforward enough
to be serviced easily.

A glass of
sparkling water,
a fresh lemonade
or a mocktail:
they all take just
a moment with
the CUBE.

Turn the
Front's ring one click
for chilled water,
two clicks
for sparkling.

Front rose copper

Did you know
a Quooker on standby
needs hardly any
power. It can keep
water at 108°C running
on only 10 watts. That's
like just two LEDs.



Two taps in the
same design.
One for boiling,
chilled and sparkling
water...

...and one for hot
and cold water.
Discover
Nordic Twintaps!

Nordic Single tap and Twintaps

Round and Square

A boiling water tap with a matching mixer tap

The **Nordic Single tap** is a Quooker 100 °C boiling water tap that sits beside a separate mixer tap. Do you want a mixer tap in a matching design? Then choose our **Nordic Twintaps**: a stunning duo that together, can do it all. And when you link a CUBE to your system, you can have chilled filtered and sparkling water from your boiling water tap, too. Available in round or square styling, and with chrome or stainless steel finishes.



Nordic Twintaps Square stainless steel

Specifications Nordic Single tap and Twintaps



Measurements Nordic mixer tap

Height Round:	345mm
Height Square:	270mm
Spout reach:	220mm
Tap hole:	Ø35mm
Turning radius:	360°

Measurements Nordic Single tap (Round is also available in Classic style)

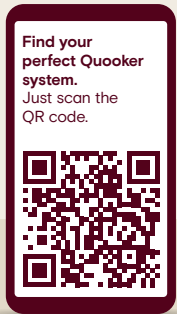
Minimum and maximum height Round:	170/405mm
Minimum and maximum height Square:	115/350mm
Spout reach:	162mm
Tap hole:	Ø32mm
Turning radius:	360°

Finishes

chrome
stainless steel

Which Quooker tank is for you?

A Quooker system is made up of a tap on the work surface and a **tank** in the cupboard underneath. There are three different tanks. Do you also want chilled and sparkling water? If so, combine your Quooker with a **CUBE**.



Do you have a hot water supply?

yes

no

Do you usually have to wait a long time for hot water?
Or is the distance between your central heating boiler
and your kitchen tap more than six metres?

no (<6m)

yes (>6m)



Our popular
PRO3 should
be perfect



Our COMBI+
should be the right
tank for you



Our COMBI
tank's best for
your needs



CUBE

yes

Do you want chilled filtered and sparkling water too?
Add our CUBE next to your tank.

For instant boiling water

PRO3

Delivers 3 litres of boiling water. A compact and popular tank, perfect for kitchens without a boiler in the cupboard, which don't have to wait long for hot water.



Specifications PRO3

General specifications

Diameter	153mm
Height	467mm
Heating-up time	15min.*
Power rating	1600W
Standby power consumption	10W
Quantity at 100°C	3 litres
Energy label	none**

Accessories

Mounting bracket
Extension kit

For instant boiling and hot water

COMBI

Delivers 7 litres of instant 100°C boiling water and 27 litres of hot water at 40°C. So you'll never have to wait for hot water, as it's always on tap. Leading edge vacuum insulation make this 'replacement boiler' the most economical kitchen hot and boiling water supply in the world, with an energy rating 'A'.



Specifications COMBI tank

General specifications

Diameter	200mm
Height	490mm
Heating-up time	20min.*
Power rating	2200W
Standby power consumption	10W
Quantity at 100°C	7 litres
Quantity at 60°C	15 litres
Quantity at 40°C	27 litres
Energy label	A

Accessories

Mounting bracket
Extension kit

For instant boiling and unlimited hot water

COMBI+

Provides 7 litres of instant boiling water or unlimited hot water. The COMBI+ connects to both the cold and hot water pipes. Just like our regular COMBI, it removes the long wait for hot water, and the waste of drinking water. And because it connects to your hot water pipe, you'll have unlimited hot water too.



Specifications COMBI+ tank

General specifications

Diameter	200mm
Height	490mm
Heating-up time	20min.*
Power rating	200W
Standby power consumption	10W
Quantity at 100°C	7 litres
Quantity at 60°C	unlimited
Quantity at 40°C	unlimited
Energy label	none***

Accessories

Mounting bracket
Extension kit

A

*Average values. **According to European laws and regulations on the energy efficiency of domestic hot water appliances, the COMBI tank has an energy rating 'A'. PRO3 tanks only supply boiling water. The EU hasn't established an energy label guideline for boiling water tanks, but these tanks are just as economical. *** Energy label n/a because COMBI+ uses an external heating source. The COMBI+ tank is as energy efficient as the COMBI.



For chilled and sparkling, too

Want chilled-filtered and sparkling water from your Quooker tap too? That's easy. Just add our CUBE.

The CUBE is a chilled water tank that sits alongside your Quooker tank. By connecting a Quooker CO₂ cylinder, you can get sparkling water straightaway. Add our optional activated carbon hollow fibre filter, and it removed impurities – including bacteria and pesticides. So you'll never need to bring bottled water back home again.

Specifications CUBE

Algemene specifications

Height	500 mm
Width	153 mm
Incl. CO ₂ cylinder	223 mm
Depth	270 mm
Incl. CO ₂ cylinder	340 mm

Cooling-down time	30min.*
Voltage	220 - 240V
Capital	100W
Standby power consumption	5W

Minimum water supply pressure (2 bar)	200 kPa
Maximum water supply pressure (4 bar)	400 kPa

Accessories

Active Carbon +
Hollow Fibre filter
(optional)

* CUBE's cool-down takes 40 minutes the first time you use it.



Did you know you can add a filter to the CUBE? With hollow fibre and activated charcoal, it offers microbiological filtration while also removing chlorine and impurities.



You can order a matching soap dispenser for every Quooker.

It sits on the worktop, and is easy to refill.



Will it fit under my sink?

It's a question you might be asking. But as long as you've got a water and electricity supply, a Quooker system should work for you.

You can fit a Quooker in a new or existing kitchen, and the Quooker tank goes under the sink. In a new kitchen, your kitchen supplier should install everything. But if you're replacing your current mixer tap with a Quooker, our service engineer can do that – or you can even do it yourself.

No space for a Quooker tank below the sink? Don't worry. With our extension kit or mounting bracket, you can also put the tank somewhere else. There are also special Quooker bin systems that help make the most of your space, combining containers for recycling and rubbish in a pull-out drawer next to the tank.

Adding a CUBE for chilled-filtered and sparkling too? It connects to the main Quooker tank.

Specifications tanks

PRO3 tank

Diameter	153mm
Height	467mm
Requires of installation height	550mm

COMBI(+) tank

Diameter	200mm
Height	490mm
Requires of installation height	580mm

CUBE

Height	500mm
Width	153mm
Incl. CO ₂ cylinder	223mm
Depth	270mm
Incl. CO ₂ cylinder	340mm
Requires of installation height	580mm



Accessoires

For all taps and tanks



Nordic soap dispenser

A refillable soap dispenser that perfectly matches your Quooker's design and finish, creating harmony on the worktop. For soap when you need it, without plastic bottles.

Finishes

chrome, stainless steel
black, gunmetal, rose copper
patinated brass, gold



Cold water filter

For refreshing cold filtered water straight from your Quooker tap. Our filter improves taste and quality by removing impurities like chlorine, sediment, and other contaminants.

Available for

Compatible with all Quooker systems made since 2018.



Tap base ring

If the hole in your worktop's too big for your Quooker, this tap base ring is the answer.

Finishes

chrome, stainless steel
black, gunmetal, rose copper
patinated brass, gold



Mounting bracket

You don't have to put your Quooker tank underneath the sink. With a mounting bracket, it can go on the wall.

Available for

PRO3
COMBI
COMBI+



Extension kit

If you'd like to put your Quooker's tank more than 50 cm away from the tap, just use our extension kit. It's easy to connect by yourself, and available in four lengths from 30 cm to 150 cm.

Available for

Flex
Fusion
Nordic-kraan



CUBE extension kit

This lets you move the CUBE further away from your Quooker tank. Available in two lengths.

Available for

Quooker CUBE



Powerswitch

Avoid the risk of electrical overload, when you need to run more than one appliance from the same socket.

Available for

Multiple appliances



Scale Control R

Extend the lifespan of your Quooker tank with our de-scaler. And improve the way water tastes, especially in hard water areas.

Available for

PRO3
COMBI
COMBI+



Find out more about Quooker, our products
and service at quooker.co.uk

Discover Quooker on social media





Quooker UK Ltd..

81 King Street
M2 4AH Manchester
United Kingdom

0161 768 5900

info@quooker.co.uk
www.quooker.co.uk